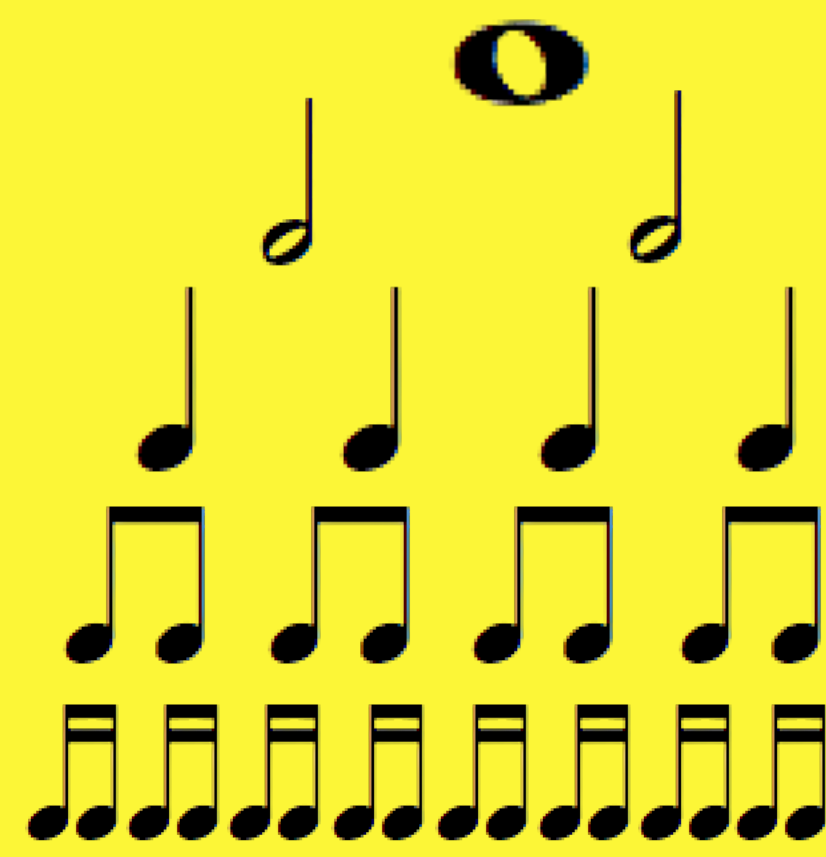
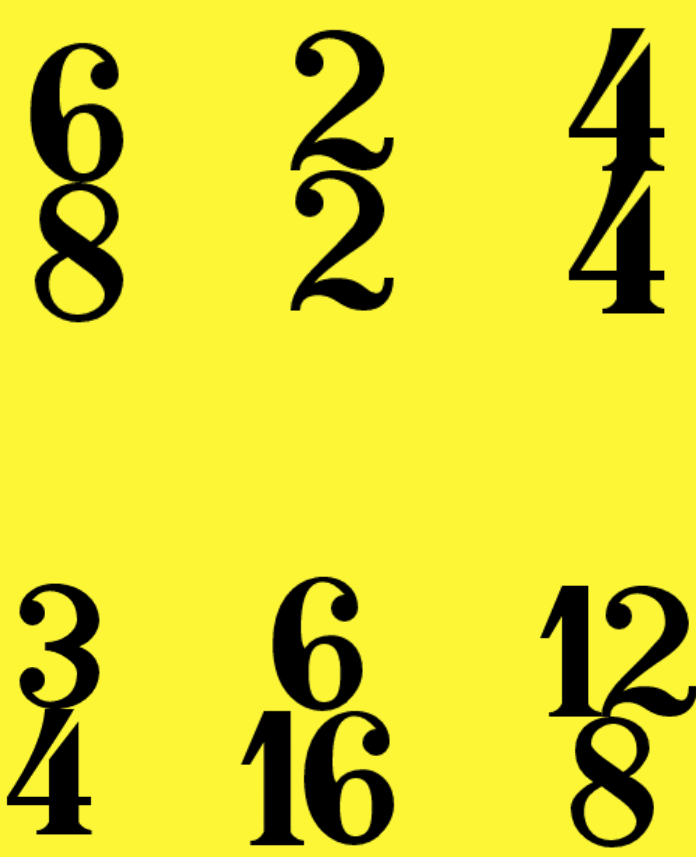


Presto = Really Fast
Allegro = Fast
Moderato = Moderate
Andante = Walking Pace
Adagio = Slow
Largo = Really Slow



Rhythm

- Tempo
- Meter
- Note length
- Syncopation

Soft

pp

p

mp

mf

f

ff

Strong

Dynamics

- Crescendo <
- Decrescendo >
- Accent ^

The same note on played different instruments produces different sound qualities. These different sound qualities are known as timbre.

Timbre

("TAM-BER")



Monophonic

- Solo
- No harmony/accompaniment
- 1 melodic line total
- Non-pitched percussion does not count as a melodic line

Polyphonic

- 2+ clear and independent melodic lines
- Ex: Counterpoint, rounds and fugues

Homophonic

- 1 clear melodic line
- 1+ supportive harmony line (typically block chords)

Heterophonic

- 2+ similar melodies occurring at the same time
- Rare in Western music

Texture

Defines the number of different musical lines and their relationship to one another.

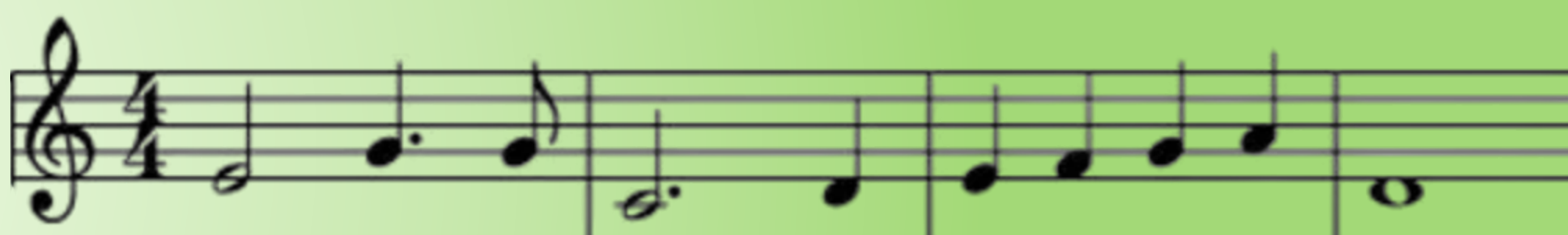
Musical Elements Review Sheet

BAND OLOGY

	Binary	Ternary	Strophic	Through Composed
Section Layout	A B	A B A	A A A	No large scale repetition
Mini Definition	B is a Contrasting section	A returns after the contrasting B section	Only lyrics change with every verse. Melody stays the same	The melody and lyrics differ in each new section

Form

A road map of the music showing the different sections based on the melody, harmony and/or lyrics.



Melody

The combination of rhythms and pitches to create a horizontal theme. Melodies are often memorable and are a key defining feature in identifying one piece from another.

The combination of vertical pitches resulting in chords (different notes played at the same time).

Harmony



Consonance = Pleasant sounding
Dissonance = Unpleasant sounding
** Both are subjective*